



Stratton Parish News

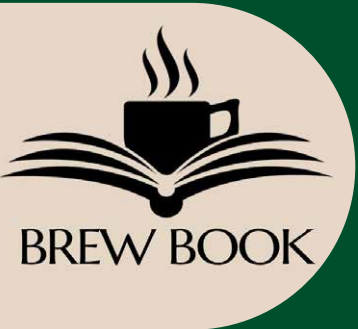
SPRING 2024 - ISSUE 009

Serving the Community

In This Issue..



Youth Club Updates
Page 8-10



Brew Book Grand
Opening
Page 14



Upcoming Events
Page 16





The Chairman's Annual Report

Cllr Tim Page, Chairman

The Parish Council of Stratton St Margaret takes great pride in its accomplishments. With a population of nearly 23,000 residents and an annual precept of £1.3 million, we are one of the largest Parishes in the UK, larger than most towns!

Our extensive facilities include allotments, burial grounds, play parks, and over 200 acres of land. We collaborate to provide essential amenities like the Grange Leisure Centre and maintain community spaces like Meadowcroft. Our commitment to community engagement is evident in our regular events and meetings, catering to all ages and interests.

In many ways this has been a busy and momentous year for Stratton St Margaret. We have many things to celebrate. Highlights of our achievements include maintaining a 0% precept increase for five consecutive years, raising a record-breaking £4789.09 for the Chairman's Charity, and initiatives like the Beechcroft Community Hub and Community Pantry to tackle food poverty. We prioritise youth development, with over 4800 interactions recorded in the past year through various programs, this includes Youth Groups and 121 sessions that cover the entire parish.

Recognised with the Local Government Award Scheme Quality Award, we continuously strive for excellence in governance and community leadership. Recent initiatives such as the fairy, dragon, and crocodile trails, along with historical commemorations like blue plaques and murals, enrich our community's identity.

None of this would be possible without the dedication of our employees and councillors, whose voluntary contributions shape the fabric of our Parish. Together, we are committed to making Stratton St Margaret the best it can be.

Local Councillors



Upper Stratton Ward
Cllr Ravi Venkatesh
e: cllrnavenkatesh@strattonst
margaret.gov.uk



Lower Coleview Ward
Cllr Anne Brooker
e: cllrannebrooker@strattonst
margaret.gov.uk



Lower Stratton Ward
Cllr Laura Butcher
e: cllrlaurabutcher@strattonst
margaret.gov.uk



Lower Stratton Ward
Cllr Tom Butcher
e: cllrtombutcher@strattonst
margaret.gov.uk



Lower Stratton Ward
Cllr Zaman Chowdhury
e: cllrzamanchowdhury@strat-
tonstmargaret.gov.uk



Merton Ward
Cllr Claire Crilly
e: cllrclairecrilly@strattonstmar-
garet.gov.uk



Coleview Ward
Cllr Jo Dilley
e: cllrjo dilley@strattonstmar-
garet.gov.uk



Lower Coleview Ward
Cllr Alison Foley
e: cllralisonfoley@strattonst
margaret.gov.uk



Upper Stratton Ward
Cllr Oladapo Ibitoye
e: cllroladapoibitoye@strattonst
margaret.gov.uk



Upper Stratton Ward
Cllr Ola Ibitoye
e: cllrolaibitoye@strattonst
margaret.gov.uk



Coleview Ward
Cllr Barrie Jennings
e: cllrbarriejennings@strattonst
margaret.gov.uk



Lower Stratton Ward
Cllr Pratap Mane
e: cllrpratapmane@strattonst
margaret.gov.uk



Upper Stratton Ward
Cllr Andree Murphy
e: cllrandreemurphy@strattonst
margaret.gov.uk



Upper Stratton Ward
Cllr Teresa Page
e: cllrteresapage@strattonst
margaret.gov.uk



Upper Stratton Chairman
Chairman Tim Page
e: cllrtimpage@strattonst
margaret.gov.uk



Coleview Ward
Cllr Tate Pullen
e: cllrtatepullen@strattonstmar-
garet.gov.uk



Lower Stratton Ward
Cllr Roger Smith
e: cllrrogersmith@strattonst
margaret.gov.uk



Lower Stratton Ward
Cllr Zoe Smith
e: cllrzosmith@strattonst
margaret.gov.uk



PROPERTY

The property management committee have been busy the last couple of months developing and improving our services throughout the parish.

Beechcroft Library

Over the past year, the Beechcroft Library Community Hub has been a top priority for the property committee. Following an extensive interior renovation, including new flooring and the installation of a lift, as well as revitalising the unused first-floor space, the library now offers a modern, accessible environment for our community. Additionally, two private rooms are now available for hire!

After gathering feedback from parishioners and conducting community consultations, the most requested addition was a café space.

Following recommendations from a Parish Council Working Party, we've partnered with Brew Book, and our community café is now open!

For more details, turn to page 14...



PLANNING & HIGHWAYS

Although not a decision-making body, this committee meets regularly, once a month, to look at planning applications within Stratton Parish and comment on developments in our neighbouring parishes.

Parishioners are always welcome to attend and air their views and to observe our workings. The committee can 'call-in' to the Borough Council those plans it believes to be contentious. Committee members are kept informed concerning road works as it affects, or might affect, our local roads.

In 2019 the planning committee introduced a neighbourhood plan under

the Localism Act 2011.

The aim of this plan is to give communities the right to shape and develop their areas. The Stratton St Margaret neighbourhood plan has been prepared by residents and led by Stratton St Margaret Parish Council and shaped by various surveys and public consultations to accurately reflect the needs and wants of the community.



Community Grant Aid

Interested in launching a community project, group, or club? Twice a year, in June and October, Stratton St Margaret Parish Council allocates grants to local charities, organizations, and activities benefiting residents. With an annual budget of £25,000, we aim to foster community growth. Details on grant applications are available on the Parish Council website.



FINANCE

In June 2022, we supported St. John Ambulance with a £1,000 grant for a Community Support Unit Vehicle. The vehicle is now operational in Swindon, providing vital first aid services. HRH the Princess Royal formally received the vehicle on February 5th. Our Deputy Clerk and RFO attended the ceremony at the St. John Ambulance training center in Devizes.



In June 2023, we granted £1,000 to Uplands Enterprise Trust for a SoundBeam musical device. This touch-free technology enables users, including those with limited mobility, to create music through movement. The trust expresses heartfelt gratitude for this inclusive equipment, enhancing independence and joy for all users.



In October 2023 we supported Friends of Grange Schools with a grant of £2,000 which enabled them to purchase a new shed. "This means that our stock, and all the equipment we use for the children's activities will stay safe, dry and secure, and will help us raise even more money for the school. It wouldn't have been possible without a very generous grant from Stratton St Margaret Parish Council. We can't thank you enough!"



Council Precept 24/25

Another year of 0% increase in precept, that's 5 years in a row we have been able to keep the precept figure the same amount!

Our budgeted expenditure for 2024-2025 is £1,531,901.00.

This is £33,653.00 higher than last year but we have been able to utilise other forms on income other than raising the precept whilst still providing the same level of service.

Our key areas of service still remain Central Services, Open Spaces, Meadowcroft Community Centre, Beechcroft Library, St Phillips and White Hart Allotments, Green Road and Lower Stratton Cemeteries, our Youth Provision and Grant Aid.

Our key areas of service still remain Central Services, Open Spaces, Meadowcroft Community Centre, Beechcroft Library, St Phillips and White Hart Allotments, Green Road and Lower Stratton Cemeteries, our Youth Provision and Grant Aid.



Committee

Open Spaces



Callam Greenwood has officially joined us as our new Open Spaces Officer for Stratton St Margaret Parish Council. Callam is a long time local resident who lives locally in the parish. He previously worked as a Geography teacher with a great understanding of conservation, trees, biodiversity and open spaces. As a resident, Callam has a great knowledge of our parks and open spaces. Please be sure to say hello if you see him around the parish!

Grass cutting season has started. The team are working tirelessly and battling incremental weather to reach all of the grass areas around the parish. They have managed to cut both cemeteries, all football pitches and most residential streets. They are battling the unseasonably wet weather every step of the way and hoping to have the first cycle finished in the next few weeks. Between grass cutting, they have also worked on edging in some key areas, weed spraying, tree planting and repainting the football lines across the parish.



A huge amount of work has gone into reinstating grass verges across the parish. The wet weather has made the ground is incredibly soft and vulnerable to being turned over by vehicles. The grounds team have been out to a number of locations across the parish to reinstate these verges and lay grass seed ready for the growing season.



Our caretaker has been painting playpark equipment and rejuvenating benches across the parish. Particular attention has been paid to the 'Canadian Bench' on Ermin street which has undergone a full repaint. Our seasonal gardening has also been working hard planting a wide range of flowers in beds and pots to help bring a spring feeling across the parish. Do your bit to keep Stratton clean!



Full Plot Our largest plot available	3/4 Plot Suitable for experts	Half Plot Half of a full plot	Quarter Plot Our most popular size	1/6 Plot Perfect for beginners	1/8 Plot The smallest plot we currently offer
£ 88 /per year	£ 66 /per year	£ 44 /per year	£ 22 /per year	£ 16.50 /per year	£ 11 /per year
• 12 metres x 45 metres	• 12 metres x 45 metres	• 12 metres x 22 metres	• 6 metres x 22 metres	• 6 metres x 11 metres	• 6 metres x 11 metres

Allotments

In February we held our annual allotment event. Eddie Bailey from Rhizophyllia attended as a guest speaker who gave some great insights into allotments and educated our plot holders on growing techniques and different types of soils. The parish provided refreshments and nibbles for the tenants and it went down a huge success.

If you would like more information or would be interested in renting an allotment at either of our sites please contact madison.sheppard@strattonstmaragret.gov.uk.

Bug Hotel

Check out our new Woodland Bug Hotel, located at St. Philips Allotment (Meadowcroft).

This was bought from Wild Life and Birdcare UK Habitat Manufacturer.

We hope this new feature will help our residents and young people of the parish to connect with nature and encourage our wildlife to flourish.



Green Road Chapel Restoration

Before



The restoration of Green Road Chapel is complete!

This involved a complete renovation of the chapels interior, including new flooring and restoring the original church seating.

After



We hope the chapel will enrich our community, offering another venue for local events and meetings, while preserving its timeless appeal. Let's uphold and cherish such historic landmarks in Stratton.

If you would like to hire the chapel for any event please contact: info@strattonstmaragret.gov.uk

Sub Committee

Youth



Cherry

Meet your Youth Worker...

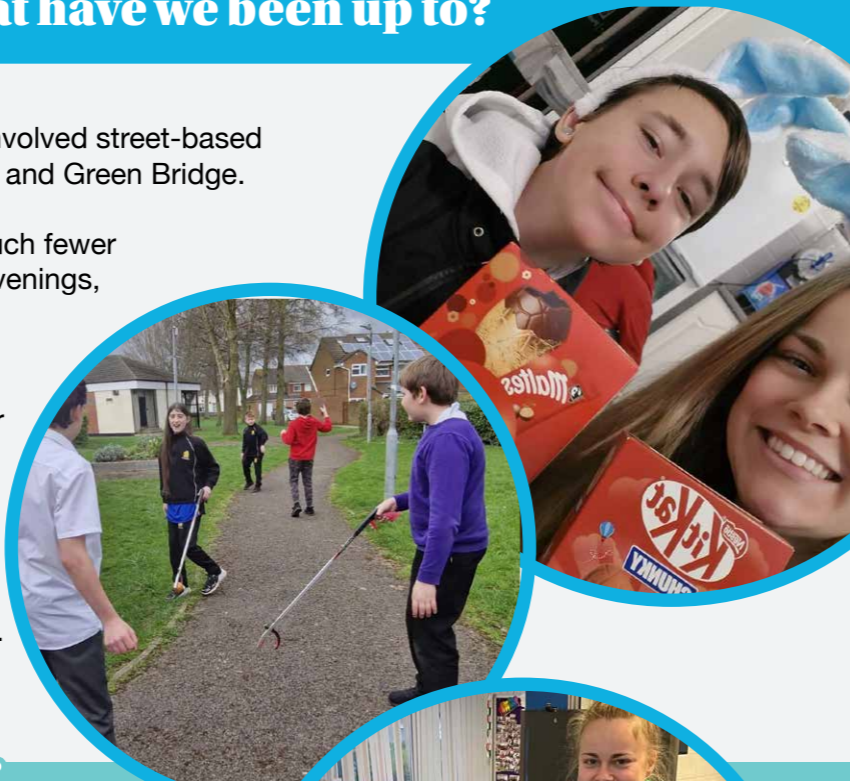
Cherry has served as a youth and community worker over the last 10 years in Wiltshire and Swindon. Cherry has ran youth centres, clubs and trips in the community and enjoys working with a diverse set of young people!

What have we been up to?

Tuesday, Wednesday and Thursday evenings have involved street-based sessions at Meadowcroft, Merton, Coleview, Grange and Green Bridge.

This winter the cold weather has shown there are much fewer young people gathering in the green spaces in the evenings, especially with the rain and unpleasant weather. The outreach sessions have been limited to interact with children elsewhere, e.g. Beechcroft Library during the holidays. We're looking forward to warmer months to continue our outdoor activities.

In April we said goodbye to Caz, our youth club assistant, who has worked here for 2 years since the very beginning of the youth sessions! Stacey has now joined the team as our new Youth Assistant.



Things to look forward to...

Our annual PGL residential trip will take place at Windmill Hill, East Sussex which was approved at Youth Council, where we will be taking 15 young people in August!

We are also looking to start a child bereavement group at Beechcroft Library. There are several children just attending youth sessions who have sadly lost a parent, are in care or have other losses in their life. After additional training, the session is looking to start in the new school year.



LGBTQ+

This session continued to thrive and promote a safe environment for LGBTQ+ young people. We have engaged with other similar provisions including Out of The Can. Our group supported 'Out of The Can' the recently with their recent short film, showcasing the impact the charity has on going people. We took a group of young people to watch the premier of the short film, at New College.



Out of The Can is a local charity, running support sessions for LGBTQ+ young people. It's a no judgement zone to access support and acts as a safe space for young people to be themselves. The location is given to those showing interest in attending, rather than publicising it, for safety.

"The group will give you the freedom to be yourself in a supportive environment and chilled out space. The group has been running in Swindon since 2004 and in September 2022, the group expanded to run twice on a Tuesday evening".

Neurodiversity Club

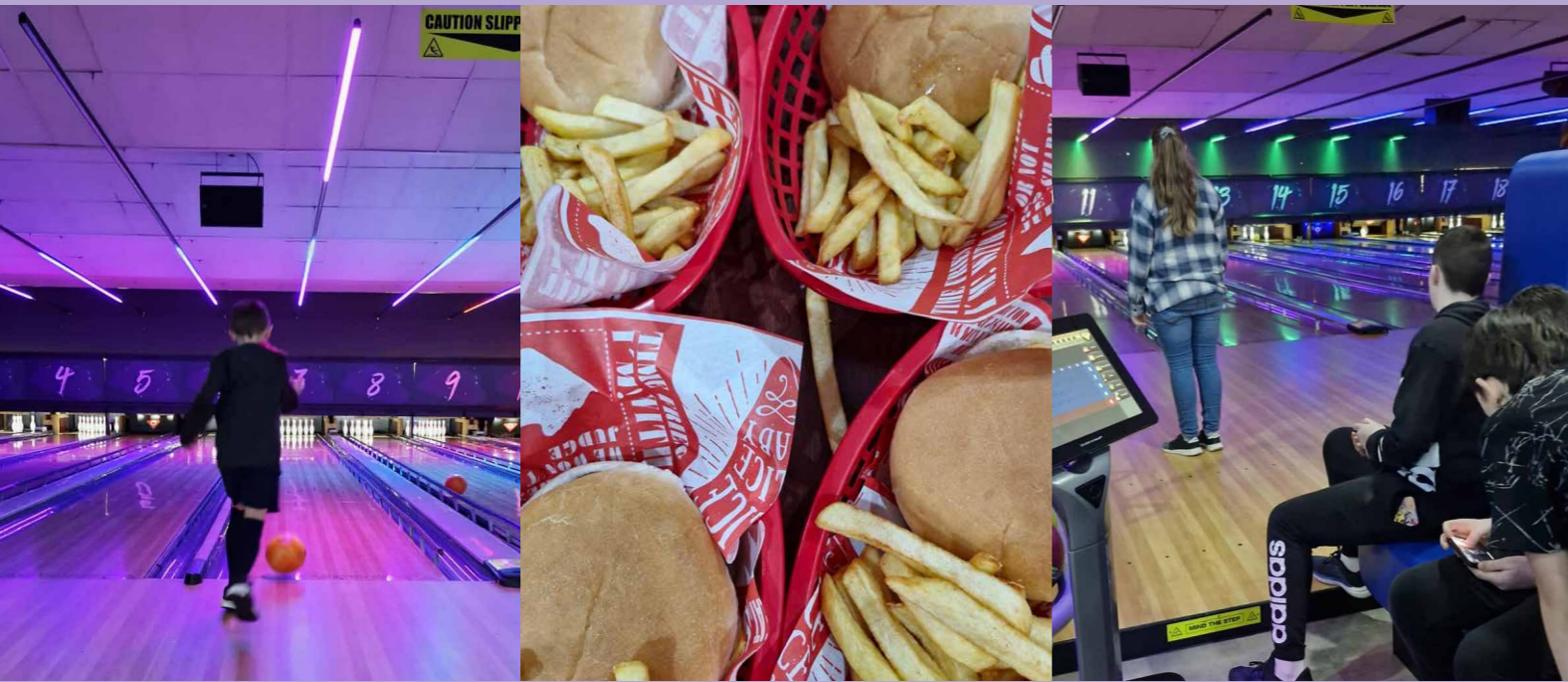
We continue to reach around 9 young people in these sessions, some of which have a carer alongside them. Held at Meadowcroft, we use both the youth room and hall as a safe space to enjoy activities in a quiet environment.

We recently had a visit from Chloe's Farm to learn about small animals, feed and handle them. This included Guinea pigs, ducks and rabbits. Everyone showed an enthusiastic interest in this and we have re-booked another activity with Chloe's Farm to learn and feed new born lambs. Chloe's Farm specialises in working with SEND children and young people.

Stacey



Tenpin Bowling



We recently took 25 young people to Tenpin, West Swindon, during February half term. Each child received a drink and hot meal (burger and chips) and two games of bowling.

Our new youth worker joined the team on the day of this trip, which gave an opportunity to bond with the young people, before starting the youth session afterwards. After the games of bowling, the young people were given time to play in the arcade, before heading back to Meadowcroft for the youth session workshop in Self-Defence.

Self Defence Workshop

Strattons youth club took part in a self defence workshop. The girls in-particular thoroughly enjoyed the class led by two black belt trainers from Matt Fiddes, learning new safety skills.

We are looking into booking more sessions like this as it was very popular.



Monday

7 - 8:30 AM
BREAKFAST CLUB
 @ MEADOWCROFT CENTRE
 *FOR PARENTS & CHILDREN
 OF ALL SCHOOL AGES

Wednesday

3:30 - 5:30 PM
LGBTQ+ CLUB (AGES 10-14)
 @ MEADOWCROFT CENTRE
 6 - 7 PM
**NEURODIVERSITY/ADDITIONAL
 NEEDS YOUTH CLUB**
 @MEADOWCROFT CENTRE
 7 - 9 PM
EVENING STREET SESSION
 @ MERTON

Tuesday

3:30 - 5:30 PM
YOUTH CLUB (AGES 10-14)
 @ MEADOWCROFT CENTRE
 5:30 - 6:30 PM
OUT REACH SESSION
 @ MEADOWCROFT

Thursday

3:30 - 5:30 PM
YOUTH CLUB (AGES 10-14)
 @ MEADOWCROFT CENTRE
 5:45 - 8 PM
OUT REACH SESSION
 @ GRANGE/COLEVIEW



@SSMPCSWINDON



@SSMPCSWINDON

01793 823761

CHERRY.RILEY@STRATTONSTMARGARET.GOV.UK



Beechcroft Library

Beechcroft Library and Community Hub always welcomes everyone! We are a Warm Spaces Hub during these colder months and we have free tea, coffee and squash in the library. We now have a new children's audio Toniebox to choose from and board games available to play in the library. We also run a selection of different activities each week, including a Fun Art Group, Bereavement Group and children's Story Time. There's sure to be something here for you to enjoy!

For more details on any of the library activities, please contact us on 01793 680030 or email us at: beechcroft.library@strattonstmargaret.gov.uk

Did you know?

Stratton St Margaret Parish Council now has its very own Community Pantry?

This is situated at the Community Hub in Beechcroft Library and is to help the food deprivation within the parish, whereby anyone who lives in our parish can visit the pantry on its designated opening times and choose items to take home. (Tuesday 10am - 12pm) (Friday 1pm - 3pm)

Did you know?

Beechcroft Library now has a new Communication Board

! It helps people express themselves using photos, symbols, or illustrations.

Users can gesture, point, or blink at images to communicate. It's been very popular since it was installed, we hope you can all come and enjoy it too!

Did you know?

Beechcroft Library also has a new community group, Stratton Woman's Support Group by Mind every Wednesday from 10.30am - 12.30pm.

Attendees need to self-refer to this group by the referral process which can be found here: <https://www.sgmind.org.uk/downloads/>

Librarians Sheila & Vicky



Beechcroft Library is open for longer! Our hours are now: Tuesday, Wednesday and Thursday: 10am - 7pm and Friday and Saturday: 10am - 5pm. Come and see what we have to offer.

Beechcroft Library has some interesting visits coming up in the next few months; the firemen will be visiting on Thursday 18 April at 10.30am with their fire engine and there will be some sunflower seed planting on Saturday 20 April between 12pm and 2pm for Earth Day. Our usual Saturday Story Times are on Saturday 6 and 20 April at 11am, plus our regular Lego Club will be taking place on Saturday 27 April from 10.30am,. Follow our Facebook Page "Friends of Beechcroft Library" to find out more.



Events



Stratton St Margaret Parish Council

PUBLIC ENGAGEMENT SESSION

THE 1ST THURSDAY OF THE MONTH
6PM TO 7PM
AT GRANGE LEISURE CENTRE

This session is an opportunity to meet your Local Council representative, let them know what is important to you in the area, what changes you would like to see or concerns you have and how they can best represent you as residents in Stratton St Margaret.



On occasion there'll be a representative from Wiltshire Police in attendance, if you have any concerns you wish to discuss with them.

Volunteering

This is a great opportunity to develop your skills, work within a small team and get to know and support your local community!

Available hours include:
Friday 10am - 12pm
Saturday 1pm - 5pm

If you would like to volunteer then please get in touch with Beechcroft Library by email at: beechcroft.library@strattonstmargaret.gov.uk or call us on 01793 680030

What's On?



We offer two rooms for hire at competitive rates in the library! Perfect for parties, meetings, and family gatherings. Check out our Lego party packages for your child's birthday - £50.00 for 2 hours room hire, unlimited squash, and 18 party invites.

Contact us at beechcroft.library@strattonstmargaret.gov.uk or 01793 680030 for bookings and details. Plus, we have a lift for accessibility to the room above the library.



Stratton Woman's Support Group by MIND!

Every Wed Beechcroft Starting on 12PM

mind
Swindon and Gloucestershire

Beechcroft Library, Upper Stratton, SN2 7QQ
For more info contact:
01793 680030
beechcroft.library@strattonstmargaret.gov.uk

Attendees need to self-refer to this group. Please complete the referral process which can be found here: <https://www.sgmind.org.uk/downloads/>

With the construction work ending at Beechcroft Library, we are proud to present our new cafe space to Brew Book - the cafe for the community!

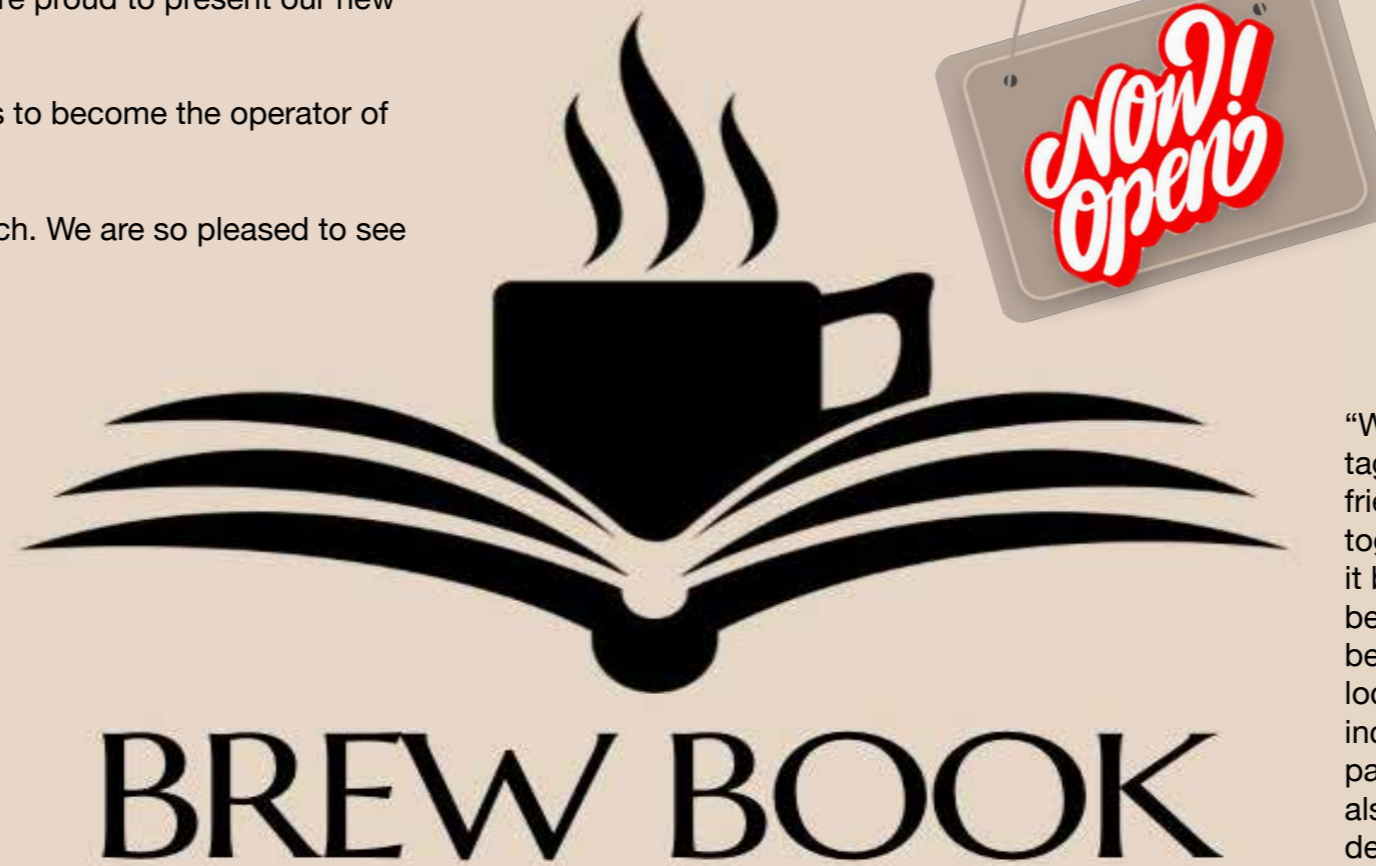
Hannah from Brew Book was successful in the tender process to become the operator of this fabulous new café.

A huge crowd gathered for the opening on Saturday 30th March. We are so pleased to see our community already enjoying this new space.

“We are really excited to work with Brew Book, They are community focused, working with many local businesses and have a strong understanding of our Parish. Beechcroft library is now much more than a library, it’s our community hub with the addition of the new community café and the community pantry the library is going from strength to strength. We were given a grant from the levelling up fund from Swindon Borough Council to make this possible. The café was an idea put forward from the public back in 2022 when we asking users of the library what else they would like to see at the library. The café was our top requested choice and we are really excited to announce that Brew Book is now officially open!” - SSMPC.

OPENING HOURS

	CLOSED
MONDAY	
TUESDAY	9am - 6pm
WEDNESDAY	9am - 6pm
THURSDAY	9am - 6pm
FRIDAY	9am - 5pm
SATURDAY	8am - 4pm
SUNDAY	8am - 2pm



“We found out about the tender for the cafe from being tagged numerous times by customers on social media, friends and like-minded businesses. From that, we put together our plan of Brew Book, a separate entity making it become ‘The cafe for the community’. Not only will we be selling and serving delicious food and drink, we will be doing it at affordable prices. We will be showcasing local businesses within the cafe and holding small events, including dessert nights, dry clay-making evenings, paint parties. There will be something for everyone. We will also be having Pete’s micro bakery providing us with delicious sourdough to sell to our customers, Connie Lou’s florist providing and selling fresh flowers twice a month plus many more local businesses supplying items of deliciousness.” - Hannah, Brew Book Owner.



What's on

Upcoming Events

Stratton St Margaret Parish Council hosts and partners with a variety of public events throughout the year ranging from festivals, to commemoration events.

Over the coming spring and summer months we have our annual assembly, a summer community festival and a car boot sale!

Wednesday 24th April - Annual Assembly

Members of the public are invited to attend the annual Parish Assembly. This is your opportunity to hear about all of the work we have been doing around the local area in the past year, as well as a chance to speak to local councillors to give feedback, raise concerns and ask questions.

May 2024 - Stratton Awards!

Stratton St Margaret Parish Council are seeking nominations for; Stratton Local Hero, Volunteer of the Year, Allotmenteer of the Year, Community Group of the Year and Young Person of the Year.

This is for people or organisations who live or operate within our parish. Nominations are open until 31st of May 2024. Please send your nomination to: info@strattonstmargaret.gov.uk including the persons/organisation you wish to nominate, your contact details, their details (you may need permission to share this) with the nomination category and why you feel they deserve to be recognised.

Awards will be presented during the awards ceremony at Stratton Festival in July.

Saturday 29th June - Stratton Festival

Our annual summer festival will be held at Grange Leisure Centre at the end of June. Join us for a fun filled day packed with activities for all of the family to enjoy! Due to the size of this event there will be limited car parking and we suggesting to walk to the event.

Sunday 21st July - Car Boot Sale

The annual summer car boot sale will take place at the end of July. Come on down to Meadowcroft for £5 per pitch to clear out your cupboards.



2024 Annual Assembly

Members of the public are warmly invited to attend the Parish Assembly!

Wednesday 24th April at 6pm
Grange Leisure Centre, Grange Drive, Swindon, SN3 4JY

GRANGE
**LEISURE AND
COMMUNITY CENTRE**

Come along to have your say, ask those questions, and enjoy some nibbles, tea and coffee.

Tel: 01793 823761
E: info@strattonstmargaret.gov.uk

Meadowcroft Community Centre
Addison Crescent, Swindon
SN2 7JX

STRATTON FESTIVAL

Saturday 29th June
12:00 - 16:00
GRANGE LEISURE CENTRE,
SN3 4JY

JOIN US FOR
LOTS OF FUN!

Limited Parking
We can't wait to see you there!

STRATTON AWARDS!

All nominations will be considered and decisions will be made at the July Full Council Meeting. Awards will then be presented at the award ceremony at Stratton Festival in July!

Stratton St Margaret Parish Council are seeking nominations from you for:

1. Stratton Local Hero
2. Volunteer of the Year
3. Allotmenteer of the Year
4. Community Group of the Year
5. Young Person of the Year



This is for people or organisations who live or operate within the parish of Stratton St Margaret.

Nominations open until 31st May 2024 for each of the categories. Please send your nomination to info@strattonstmargaret.gov.uk or via post to (Meadowcroft Community Centre, SN2 7JX) including the persons/organisation you wish to nominate, your contact details, their details (you may need permission to share this) with the nomination category and a paragraph to explain why you feel they deserve to be recognised.

@ssmpcswindon

Meadowcroft Field
SN2 7JX



8am - 12pm Sunday 21st July

£5

Per Pitch

01793 823 761 info@strattonstmargaret.gov.uk
Meadowcroft Community Centre, Addison Crescent,
Swindon, SN2 7JX



Local News

Learn, laugh and live with Swindon u3a

Spring is here and there's no better time to try something new. Perhaps there's an activity you've always wanted to try or an old hobby you'd like to renew. If so, the u3a could be just what you're looking for.

The u3a is for people no longer in full-time employment. It's a national organisation but is particularly active in Swindon and the surrounding area. There are more than 1,600 members here and it's growing - with around 300 people joining in the last year.

You can choose from over 130 interest and activity groups. These cover arts and crafts, history, music, science and technology, languages and literature, natural history, exercise groups including walking and dancing, travel, day and concert trips, board and card games and coffee mornings and pub lunches. More are created each year. In addition there are monthly meetings with speakers and annual events such as summer and Christmas parties.

u3a
Swindon

learn,
laugh,
live



Retired and seeking new interests?
Swindon u3a offers

- a vast variety of activity groups
- exciting new opportunities
- friendship, fellowship and fun

To find out more visit www.swindonu3a.org.uk
or telephone 01793 614629. Mon, Wed or Fri 10.00 -12.00

You can see everything on offer and much more about the u3a by visiting www.swindonu3a.org.uk. Or pop into our office in the Gorse Hill Community Centre for a chat with our friendly volunteers. You can also call the office on 01793 614629 between 10am and noon on Monday, Wednesday or Friday or e-mail office@swindonu3a.org.uk. There is also a u3a Facebook page.

A world of new experiences awaits you at Swindon u3a so why not join us for the opportunity to develop your interests, make new friends and have fun?

This year, SSMPC organised a commemorative event for Mother's Day at St. Margaret's Centre.

Recognising that Mother's Day can be challenging for many, we aimed to provide our community with an alternative way to honor and remember. Participants could lay flowers at St. Margaret's Cemetery in remembrance of those no longer with us, with tea and coffee also provided.

Mother's Day

The event was a great success, with lots of positive feedback. We're planning a similar event for Father's Day and will share more details on our social media. Stay tuned!



CREAM TEA & SING ALONG!
For the Over 60's

Wednesday 1st May
1pm - 3pm
Meadowcroft Community Centre
Sn2 7JX

Limited Spaces so please book!
Contact us at:
info@strattonstmargaret.gov.uk
01793 823761



Each year SSMPC supports a local charity through the Chairman's Charity scheme. Last year our chosen charity was Prospect Hospice, offering end-of-life care services for a community of more than 300,000 people across Swindon and Wiltshire.

Over the last 12 months SSMPC has raised £4,789 for the charity! Through community events, fundraisers and even a skydive by some of our parish office staff, we accumulatively managed to raise this amazing amount!

Thank you so much to everyone who has contributed, we couldn't have done it without you!

Parish Developments

In line with the Granted Planning Permission for Merton Pond, the Parish Council has asked a contractor to provide an ecological and landscaping scheme and management plan for the Pond. This is to encourage biodiversity within and around the area and to introduce native species of fauna here.

Following remedial under ground drainage works over the last couple of years, the pond has helped reduce surface water on the site of Merton, controlling the areas of flood during wet seasons.

This pond itself will also undergo some remodelling, to make it shorter and that the edges of the waterbody need to be shallow and augmented with appropriate native wild flower planting and to reduce the footprint of the pond.

These works are planned for the summer months and will take place around August.



Stratton's Community Pantry

Stratton's Community Pantry opened its door on Tuesday 5th of March and to date has already given out over 200 items!

The Pantry is based at Beechcroft Library and Community Hub and is open on Tuesdays 10am-12pm and Fridays 1pm-3pm. If you are in need of support and are a resident of the parish, you are able to take away a number of items to support with the cost of living.

The Parish Council would like to thank the generous donations received so far – these have come directly from residents, All Yours, Rugrats and Half Pints, Swindon Food Collective and from the local supermarket stores. We would also like to thank our regular volunteers who offer their free time to support users of the pantry.

We are partnering with other local organisations to ensure the stock of the pantry is maintained, which is beginning with non-perishable items.

We welcome donations to the Library and our donation boxes in Beechcroft Library, Meadowcroft Community Centre and Grange Leisure Centre.



Path Markings at Grange

Our recent addition of path markings to Grange Park, Grange MUGA, and areas around our grounds depot follows the success of last year's Meadowcroft Playing Fields path markings. These markings offer both recreational fun and educational value, providing opportunities for play, learning, and exploration. Despite their simplicity, they represent a cost-effective way to enrich our community. As warmer months approach, we encourage everyone to enjoy these new features and embrace the outdoor experience they provide.



Pantry Opening Hours

Tuesday - 10am - 12pm
Friday - 1pm - 3pm

at Beechcroft Library, SN2 7QQ



Stratton Police



With hopefully the better weather on its way and the warmer months shortly arriving. We are looking to raise awareness with parents and also the wider public about the children and young adults that are out in our community putting themselves at risk.

Last year we had occasions where groups of children were out drinking alcohol underage. There was also evidence of small cannisters of laughing gas being used. This behaviour and the actions taken not only are illegal but they are harming. If you see this behaviour in the public, then call the Police.

If you're a parent then it might be worth having chats with your children to highlight the dangers, talks about peer pressure and or walking away from situation that they shouldn't be involved in.

Youth Engagement

We are still involved with youth engagement and we will continue to attend youth clubs and look to carry out educational visits within the community.

Please keep an eye out on our social media pages for community drop in surgeries. Where you can come along and speak to the local team about issues in the area or if you want to seek any crime prevention advice. Our Local facebook page is 'Stratton, Central Swindon North and West Swindon Police'



GRANGE LEISURE AND COMMUNITY CENTRE

GRANGE LEISURE AND COMMUNITY CENTRE

LES MILLS CLASSES

- Body Attack
- Body Balance
- Body Pump
- Body Combat
- Grit
- RPM
- Sprint
- The Trip

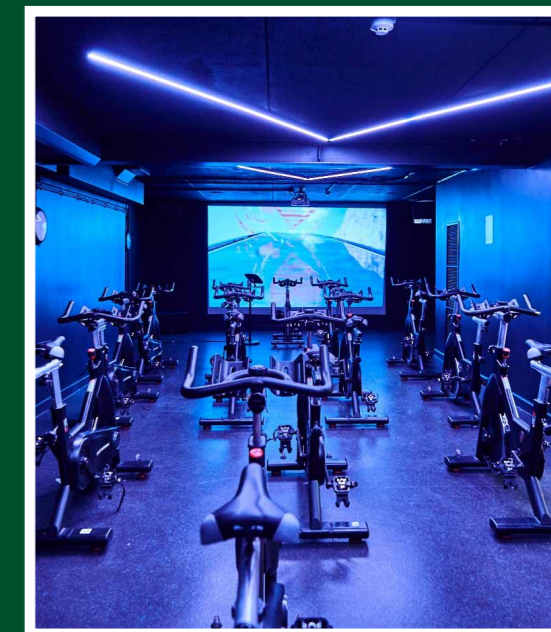
TRY A CLASS FOR FREE!

LEXLEISURE
LeisureCentre.com

Interested in Spinning classes?

Grange Leisure offers both virtual and instructor led sessions every day! 45 minutes of cardio peak training where we mix great music, lively energy and challenging efforts that you can tailor to your own fitness level.

Contact us on 01793 825525 or pop into the centre for further information.



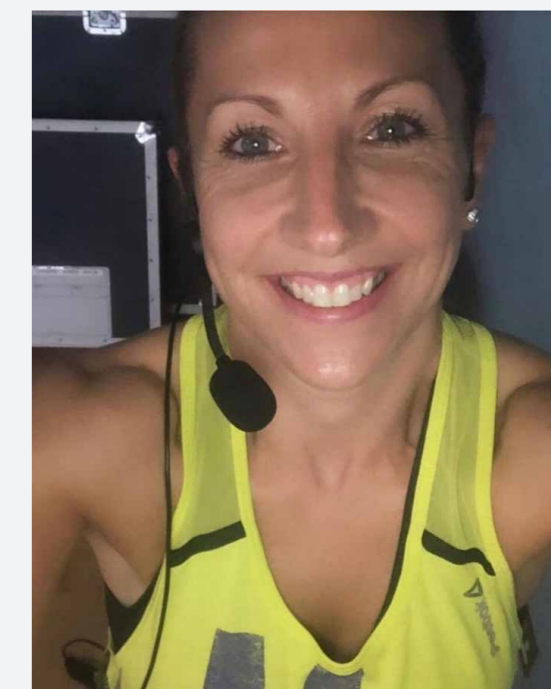
Spin Classes

Meet our PT Claire

Meet Claire, one of our personal trainers and fitness instructors!

"I have always loved fitness and started participating in group exercise classes when I was 16 with my Mum. Since then I have always been in the gym and attended classes, it was only when I was 35 that I realised I wanted to get into fitness as a career and it has been amazing. I love sharing my knowledge to help people enjoy fitness and to see their results (within themselves and physically) is so rewarding. I get such a buzz when I'm teaching my group classes and have made wonderful friendships along the way through classes and by Personal Training"

Get in touch with Claire or one of our staff on reception if you have any queries or are looking for personal training sessions!



Knife and Weapon Amnesty Bin

Did you know Stratton St Margaret Parish installed a knife disposal bin?

You can find this at the back of the Pavilion at Meadowcroft Community Centre SN2 7JX.

The Police have a key to this bin and have been visiting regularly to dispose of any knives and weapon that get anonymously deposited.



Spring Activities

R	I	U	B	K	B	L	O	O	M	U	F	T	C
H	T	M	D	L	C	P	N	O	B	L	T	B	W
P	C	L	U	U	L	I	I	C	W	H	I	Y	I
L	N	O	L	B	F	A	H	C	N	R	T	H	Y
G	N	I	R	P	S	I	O	C	N	I	T	A	F
P	I	L	D	E	S	B	U	C	C	I	B	T	L
N	B	O	M	O	S	S	O	L	B	U	C	C	O
Y	L	F	R	E	T	T	U	B	N	K	M	H	W
I	C	S	U	N	S	H	I	N	E	U	S	O	E
E	L	M	F	I	M	L	Y	U	U	E	S	H	R
R	A	L	L	I	P	R	E	T	A	C	U	E	S
S	R	L	U	A	M	S	S	E	L	A	M	B	T
S	E	A	S	T	E	R	N	S	B	M	L	R	M
P	L	I	D	O	F	F	A	D	O	C	C	O	M

- FLOWERS
- BEE
- CATERPILLAR
- SPRING
- DAFFODIL
- BLOSSOM
- CHICK
- BLOOM
- PICNIC
- BUNNY
- HATCH
- BUTTERFLY
- LAMB
- EASTER
- SUNSHINE



FAQ's



Can you fix damaged path surfaces and pot holes?
SSMPC are only responsible for keeping paths clear from debris, issues with path and road surfaces should be reported to SBC highways.

Why are trees not pruned more regularly?
Substantial and frequent pruning of trees can often weaken its structure, and therefore should be avoided to ensure safety.



Can the grounds team deal with abandoned cars?
For any vehicle related issues please report this directly to DVLA, SSMPC has no authority in this area.

How can I apply for a community grant?
Applications open twice a year, May and September. Head to our website for an application form and t&c's (strattonstmargaret.gov.uk/community-grants)



Can I rent an allotment in Stratton?
To rent one of our allotments you must be a resident of the Parish. To enquire about renting please email us with your full name, address & preferred site.

Can I buy a burial plot in Stratton?
SSMPC owns 2 cemetery sites, Green Road and St Margarets. You must live within the parish to purchase a plot as grave spaces are limited and residents take priority.



Did you know?



'The Chairmans Charity' each year SSMPC's current chairman selects a local charity to support which the council donates funds raised from community events! This year we are supporting Prospect Hospice.

Arkell's was established by John Arkell 180 years ago and is Swindon's oldest business, handed down through the generations!

Every Friday at Meadowcroft Community Centre we host a FREE community cafe from 10am-12pm where residents can enjoy tea, coffee and snacks.

Stratton derives its name from the Latin, strata (meaning a paved way or street) after the Roman road which runs straight through the parish from south east to north west.

In the past, the people of Stratton were commonly known as 'crocodiles'. The name came from a local story that some Stratton men once armed themselves against a supposed crocodile found at the side of a road.

2024 Meetings

Date	Event	Start
May		
15th	Full Council	7pm
22nd	Planning	7pm
29th	Open Spaces	7pm
June		
5th	Youth	7pm
12th	Planning	7pm
19th	Property	7pm

Date	Event	Start
July		
3rd	Finance	7pm
10th	Full Council	7pm
17th	Planning	7pm
24th	Personnel	7pm
31st	Open Spaces	7pm
August		
21st	Planning	7pm

Useful Numbers



Beechcroft Library	01793 680030
BEST Trust	01793 200124
Community Centre	01793 823761
Drove Vets	01793 821821
Grange Leisure	01793 825525
Great Western Hospital	01793 604020
Merchiston Surgery	01793 823307
Open Spaces	01793 823761
SSM Womens Institute	01793 829900
St Margarets Church	01793 826505
Stratton Parish Council	01793 823761
Swindon Carers	01793 531133
Swindon Mind	01793 432031
Swindon Sexual Health	01793 604038
The Pest Controller	07557 023940

Co-op Funeral Service	01793 539432
Hillier Funeral Service	01793 522797
Pearce Funeral Service	01793 832072
G&L Evans Funerals	01793 237852
Franklin Memorials	01793 766715
AE Smith Funerals	01793 237885
Kingsdown Crematorium	01793 822259

Beechcroft Infants	01793 823278
Colebrook Infants	01793 331960
Colebrook Junior	01793 823057
Grange Infants	01793 823278
Grange Junior	01793 823278
Kingsdown	01793 822284
Ruskin Junior	01793 332107
St Catherines Primary	01793 822699
St Lukes Academy	01793 705566
St Phillips Pre School	01793 705769



Community Rooms



ROOM TO HIRE AT - MEADOWCROFT COMMUNITY CENTRE

Private Booking= £15 per hour
Community Bookings= £12 per hour

- 01793 823761
- info@strattonstmargaret.gov.uk
- Addison Crescent, Upper Stratton, Swindon, SN2 7JX



ROOM TO HIRE AT - BEECHCROFT LIBRARY

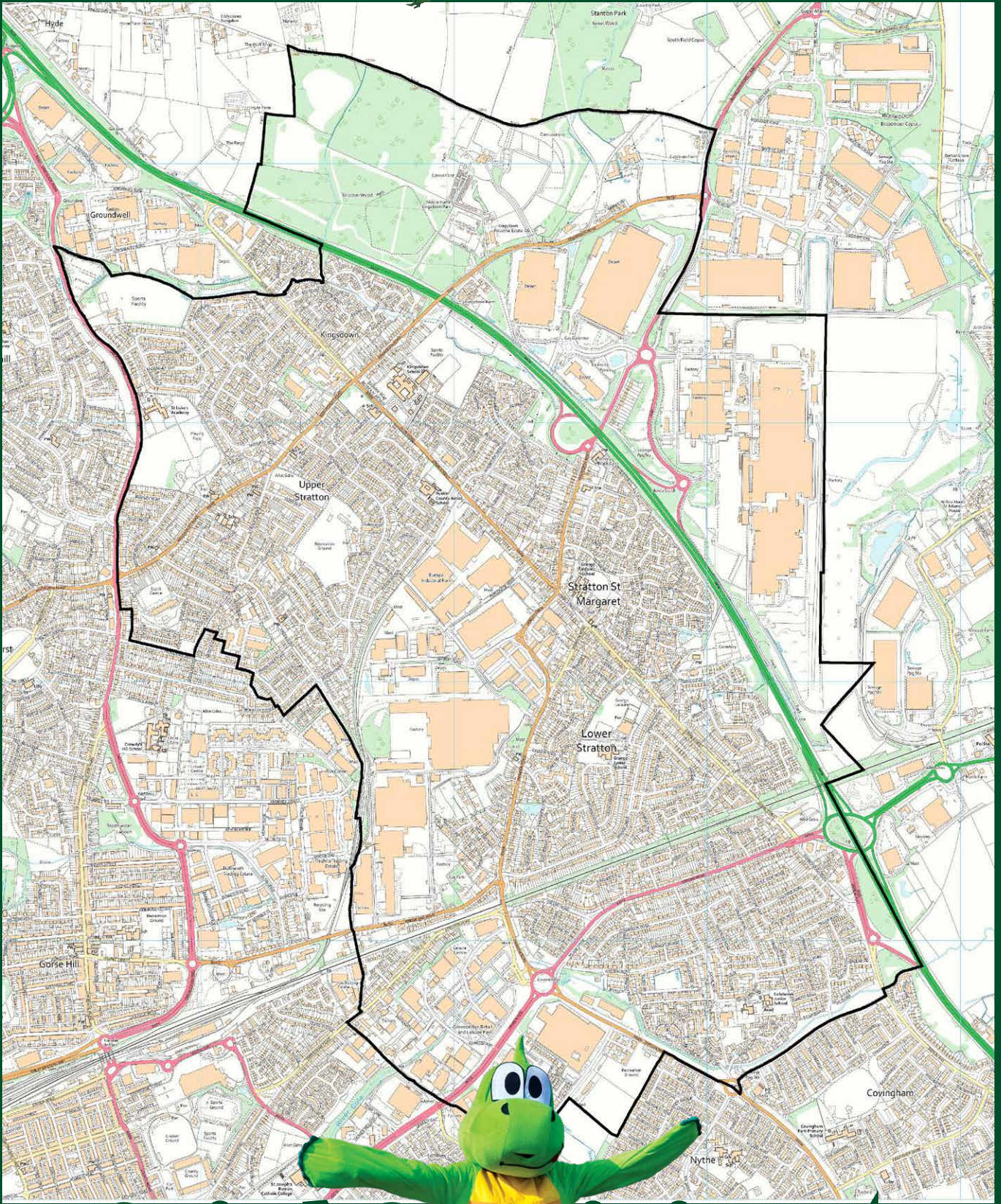
Private Booking= £10 per hour
Community Bookings= £10 per hour

- 01793 680030
- beechcroft.library@strattonstmargaret.gov.uk
- Beechcroft Road, Upper Stratton, Swindon, SN2 7QQ

Local Contacts



Stratton St Margaret
Parish Council



Serving the Community since 1894

SPRING 2024 - ISSUE 009